



SP Diagnostics - www.spsupport.com



SPi Suite Pincode Access

SPi Suite Pincode Access

This guide provides you with information on how to use the Pincode Access function on your SPi.

For more guides visit the SP Diagnostics Support website www.spsupport.com and go to the Products – SPi – Documents section of the site.

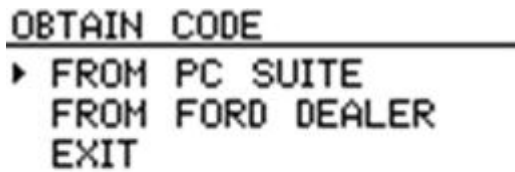
Version 1.001

Using the Pincode Access on the SPi handset

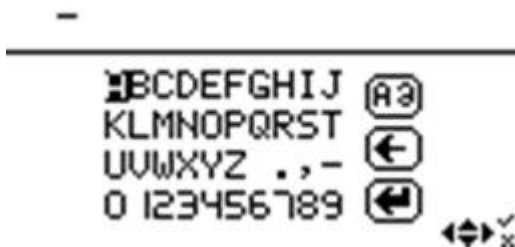
1. Navigate to the appropriate vehicle and select the Keycoding option. Once the system has established communications you will be presented with a screen similar to this.



2. Select the Program keys option and follow the on screen instructions. You may be asked to remove the Key from the ignition and insert the New key. In the case of the Ford software you are able to select 2 methods of obtaining the Code for the vehicle.



3. If you select the PC Suite option you will be required to enter the VIN for the vehicle. It is important that the correct VIN is entered as this will be verified during the internet connection stage before obtaining the information required to gain security access to the vehicle.

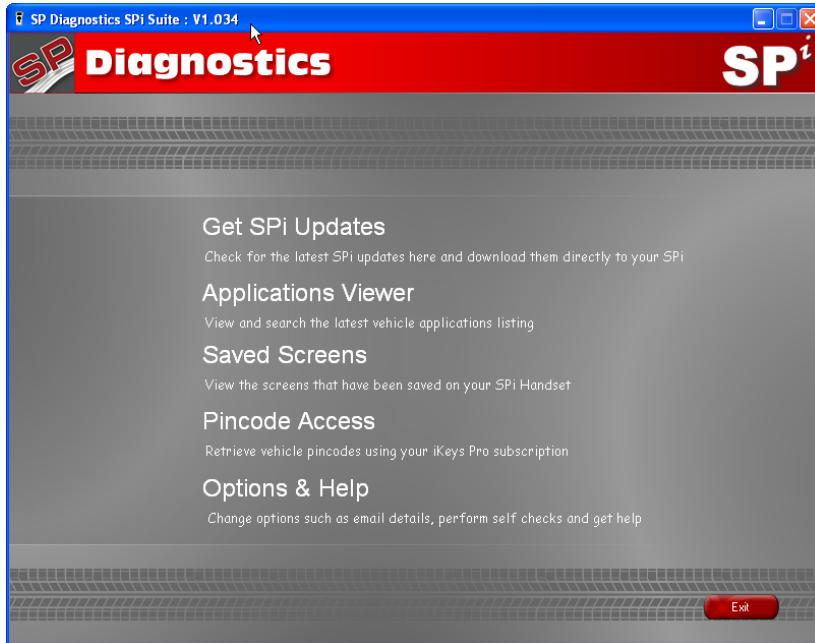


4. You will then be asked to unplug the unit and use the Spi Suite to upload the information to our servers for processing.



Connecting the SPi handset to the Spi Suite to get the required information

5. Start the SPi Suite using either the *SP Diagnostics SPi Suite* icon on your desktop or on your start menu (*Start > All Programs > SP Diagnostics > SPi Suite*).



6. From the main screen click:

Pincode Access

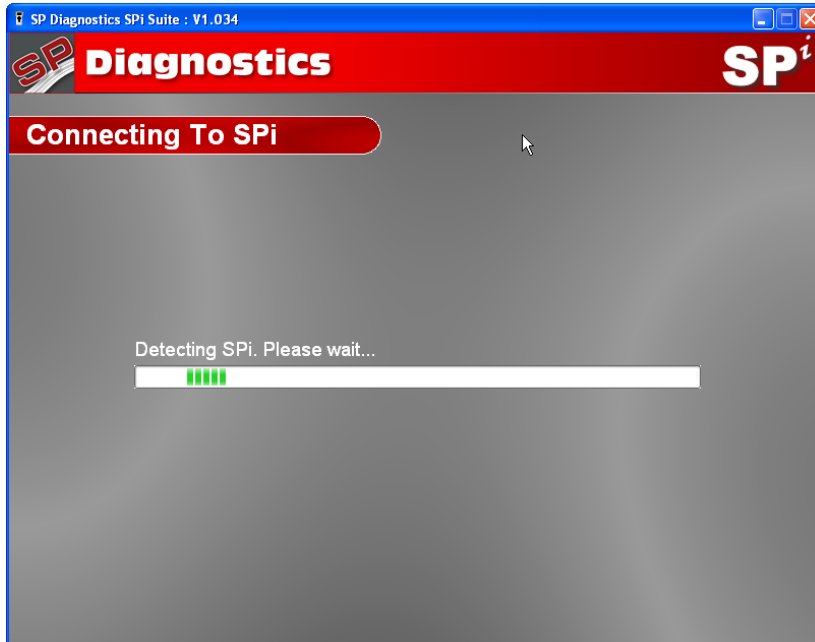
Retrieve vehicle pincodes using your iKeys Pro subscription

7. Connect your SPi as shown and click

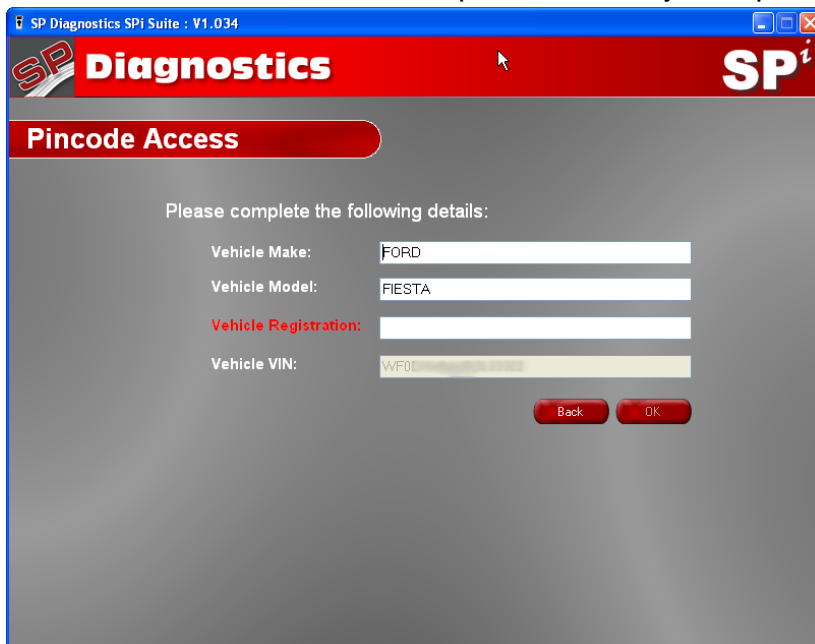
Next



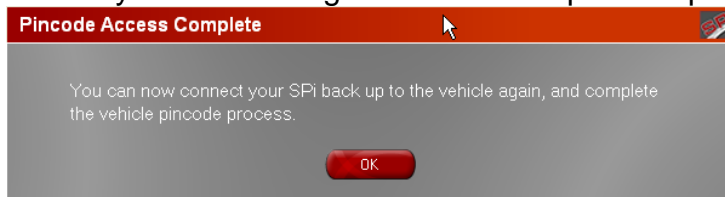
8. The Spi Suite will then connect to the internet:



9. You will then be required to enter details of the vehicle you are currently working on. Some of this information will be provided from your Spi:

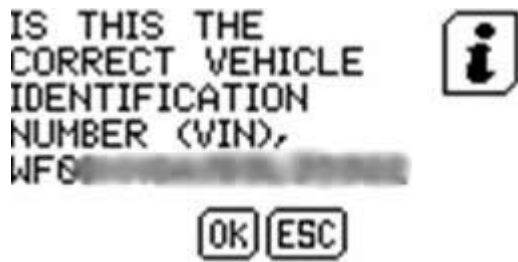


10. Once the process is completed you will be able to unplug the Spi and back into the vehicle you are working on to finish the pincode process:



Connecting back into the vehicle to complete the process.

11. Follow steps 1 and 2 above. You will then be asked to verify the VIN code on the vehicle again to ensure the information we have provided matches with the vehicle you are programming the key on.



12. Security access will then be granted and you will be able to complete the process and program the Key or Keys into the vehicle.



PO BOX 3467, Chippenham, Wiltshire, SN15 9FH, UK

Sales & Customer Services: + 44 (0)845 6016510

Facsimile: + 44 (0)8700 941753

Email: sales@spdiagnostics.com

Email: support@spdiagnostics.com

www.spdiagnostics.com

www.spsupport.com