



# Diagnostics

Innovators & Manufacturers of  
Automotive Diagnostics

Tel: 0844 561 7861  
Fax: 08700 941753

## 1410 – SPi Electronic Service & Diagnostic Tool

### Please read this information carefully before using your new SPi Handset

Thank you for purchasing your SPi diagnostic and service tool. We at SP Diagnostics believe that you will have many years of successful business as a result of your investment and it is our aim to ensure that you will remain as up-to-date as possible. Please refer to these instructions when using the tool, if you experience any difficulties then please contact the technical help line on the number below:

### TECHNICAL HELP LINE NO. 0844 561 7861

Please register your product with SP Diagnostics by completing the registration card that came with your product. (please remember to affix stamp before posting), you can also register on-line by selecting the following link: [www.spsupport.com](http://www.spsupport.com) which will give you exclusive access to the SPi support area!

By registering your product you can take advantage of the following:

- SP Diagnostics product and technical updates via email
  - SP Diagnostics will keep you up to date with new products, special offers and technical information
- Notification of application updates for your new SPi tool
  - Your new SPi Tool is updateable. When updates are available notifications will be sent to all registered users and a posting will be made on the SP Diagnostics support website [www.spsupport.com](http://www.spsupport.com)

### Updating your SPi Tool

When you receive notification of an update, you can log on to the SPi support area of the SP Diagnostic Support web site and follow the instructions. Updates are easy to install and keep you up to date with the very latest software available at all times.

We are always keen to hear back from customers regarding our products, and what you would like to see included. If you have any specific thoughts, please feel free to contact our Technical Support Help line on **0844 561 7861** and discuss them with the team. Also, don't forget to log in to the **SP Diagnostics Support Forum** where you can share experiences and ask questions to SP Diagnostics technical staff and other SP Diagnostics customers. Check the **SP Diagnostics Support** website [www.spsupport.com](http://www.spsupport.com) for regular updates and product news.

### Training

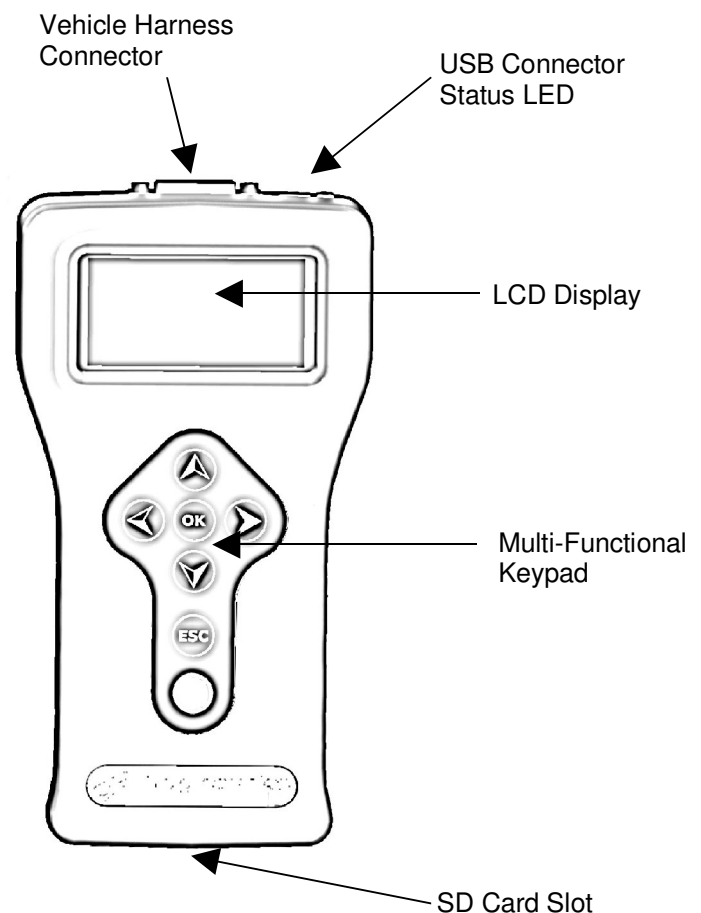
SP Diagnostics can provide access to several training courses. Please contact customer services on **0845 6016510** for details.

## Features:

- Covers over 30 Vehicle Manufacturers plus EOBD
- Consolidates existing ACR4 & G2 technology
- Use of just one J1962 harness to cover all 16Pin applications
- No more Pods required, Just 1 SD Card
- Integrated Applications List
- Large Multi-Functional graphics display with dual screen options
- High Visibility Back Lit Display
- Split Screen function to allow analogue and ECU data at the same time\*
- Monthly Internet or four monthly SD card updates
- New soft touch case with improved ergonomic design
- Easy to navigate keypad and menu systems with SP-Icons
- Full product support helpline backup
- ZigBee wireless ready, enables communications with optional add-on modules for voltage/current & temperature measurement.\*
- Future Proof design incorporates upgradeable communications protocol hardware allowing for cost effective updates if and when required.
- Fully updateable multiplexed vehicle communications eliminating the need for additional adaptors and cables for 16Pin vehicles.
- High performance processor and re-programmable hardware, via the internet or SD Card.

## Specifications:

- J1850 VPW / PWM
- ISO High & Low Speed
- CAN
- Single Wire CAN
- LIN
- Fault Tolerant CAN
- 5v Rosco Systems



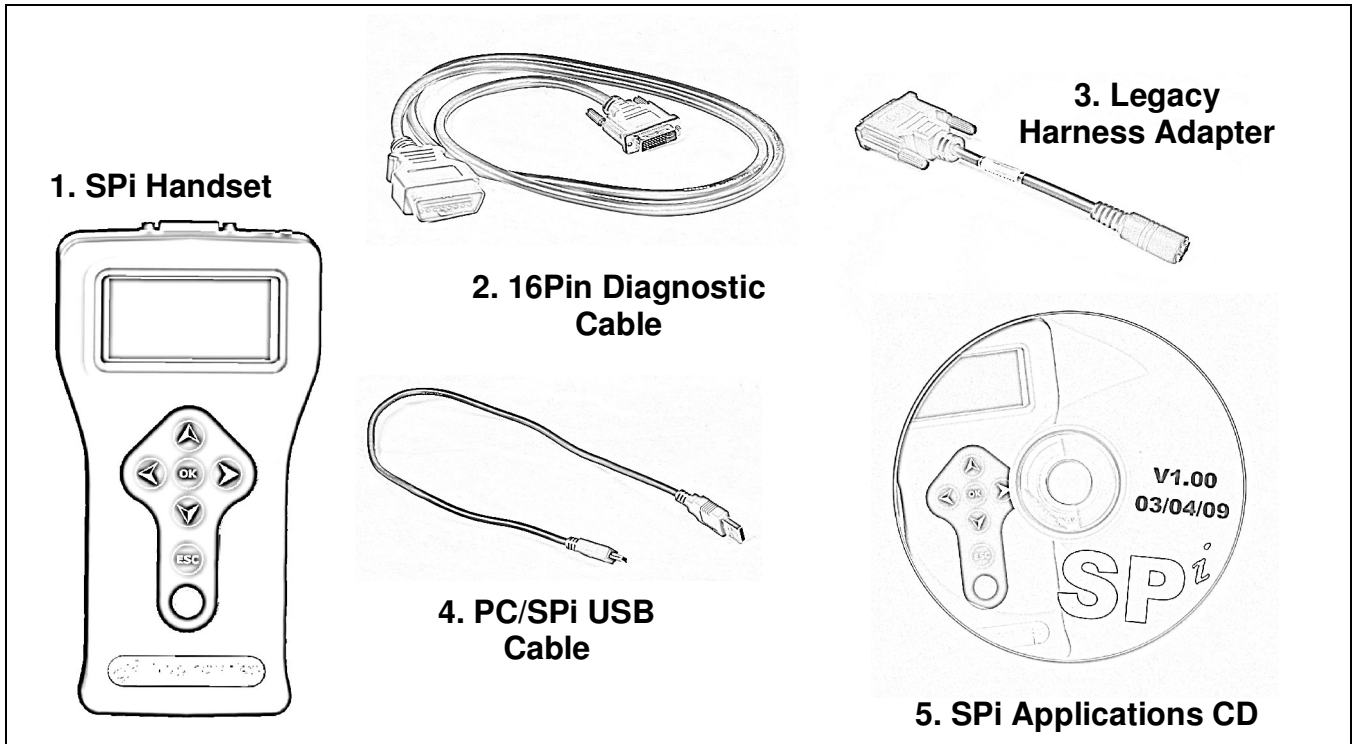
### User ID:

### Serial Number & PIN:

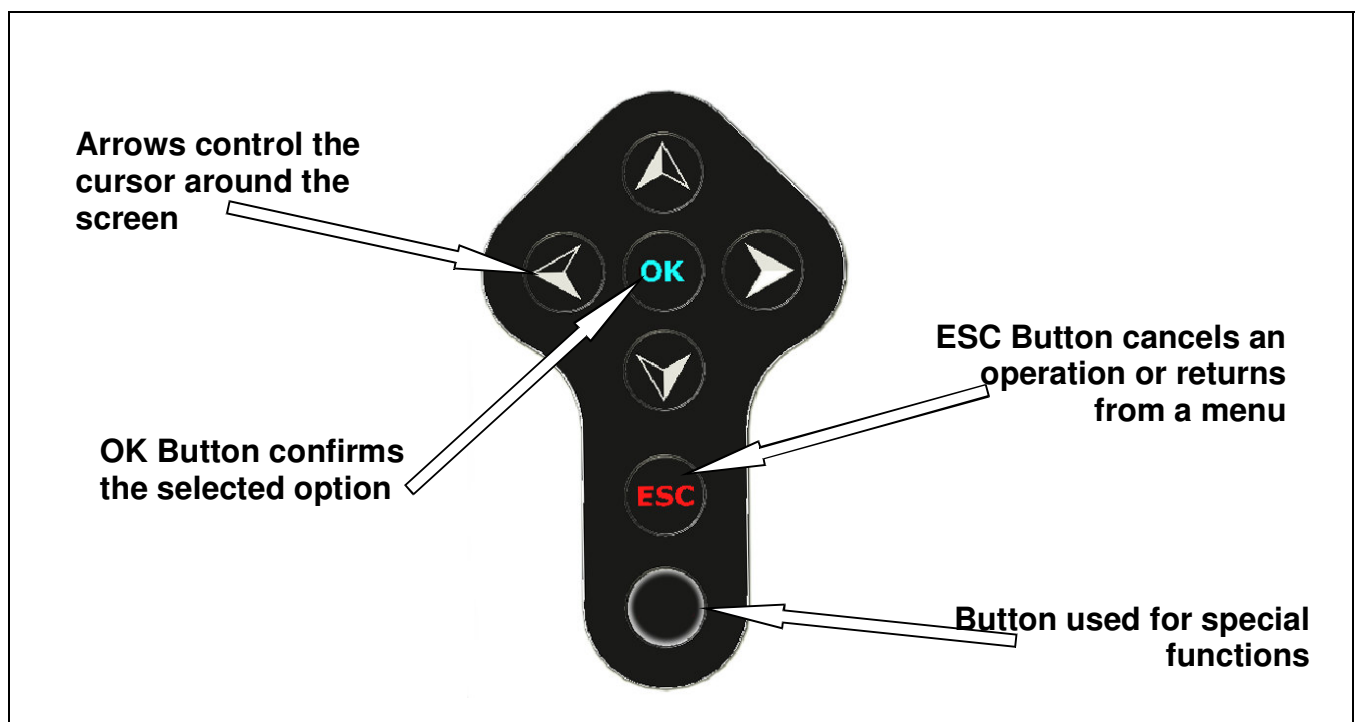
\* Functionality will be added with updates – Modules available Q3 2009

## Kit Contents

1. SPi Handset (30550100)
2. SPi 16Pin Diagnostic Cable (30220300)
3. SPi Legacy Harness Adapter
4. PC/SPi USB Data Cable (USBSPi)
5. SPi Applications CD (CDSPi)

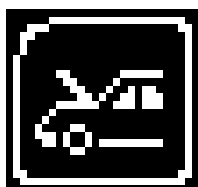


## SPi Navigation

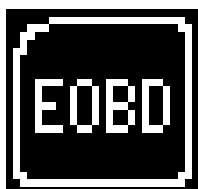


## Menu & Icons

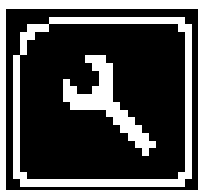
### Main Menu



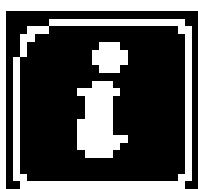
Manufacturer Icon – Select this to start Vehicle Specific Serial Diagnostics



EOBD Icon – Select this to start Generic Diagnostics functions with Graphing Capability. Remember to select manufacturer for OEM specific EOBD Descriptions!

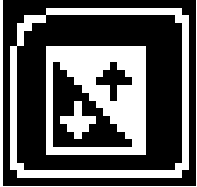
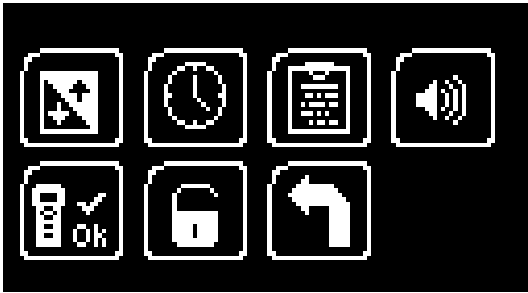


System Setup Icon – Select this to configure the various settings of the SPi

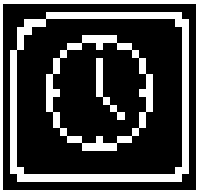


Information Icon – Select this to display software and hardware version information

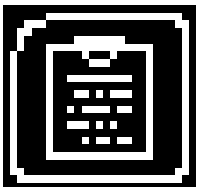
## System Setup Menu



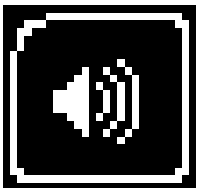
Contrast Icon – Select this to adjust the display contrast. Use the up and down arrows to adjust and press OK to save the settings



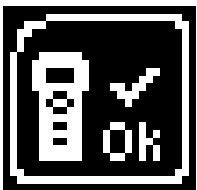
Clock Icon – Select this to change the date and time of the SPi



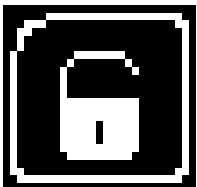
Garage Information Icon – Select this to display your user details. This is changed through the PC Suite



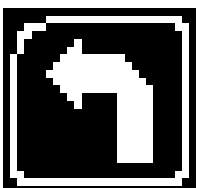
Volume Icon – Select this to adjust the sounder volume using the left and right arrow keys and press OK to save the setting



SPi Test Icon – Select this to carry out hardware tests on the SPi if requested by SP Support



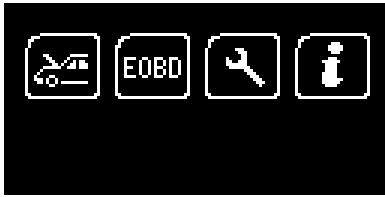
Application Unlock Icon – Select this to unlock application packages available to you depending on your subscription



'Back' Icon – Select this to return to the previous menu

## First Time Use Procedure

Your SPi arrives to you in a locked state. This is for security and registration purposes. To use your new SPi first you are required to unlock your unit. Please follow the instructions below to obtain your "Registration Code":



Plug the SPi in to the diagnostic socket on any available car with a 16Pin socket, or if you have an ACR4 power supply you can use this in conjunction with the "Legacy Harness Adapter". The handset will now boot up and you will be presented with the main menu.



Using the arrow keys, navigate to the "System Setup Icon" and press OK to enter the "Setup" menu.



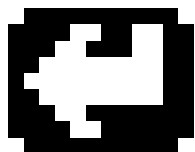
Using the arrow keys again, navigate to the "Application Unlock" icon and press OK to enter the unlock screen.



Record the Serial Number and the Registration Code on the screen and then call Technical Support on 0844 561 7861.

You will be asked to provide your customer details including an up to date email address. This is important so as we can keep you informed of any software updates.

Technical Support will now use this information to generate an "Unlock Code" and when asked please press the OK button to proceed to the next step.



“ENTER”

Technical Support will provide you with the unlock code.

Using the arrows to navigate around the on screen keyboard, enter your code provided by Customer Services. Mistakes can be deleted by using the ESC key. When you have entered your code you can confirm by navigating to the “Enter” button on the screen and pressing OK on the keypad.

Check your code if you have any problems and start again by disconnecting and re-connecting your SPi.

**Your SPi is now ready for use!**

## Web Site Registration

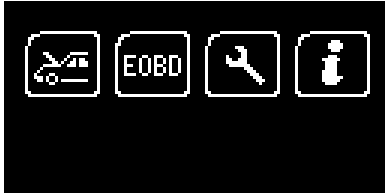
It is important that you take the time to register on the SP Diagnostics Support web site at [www.spsupport.com](http://www.spsupport.com) . To do this click on the “Register” text at the top right hand of the screen and follow the instructions. Make a note of your .....

Username \_\_\_\_\_ and Password ( or reminder) \_\_\_\_\_ here.

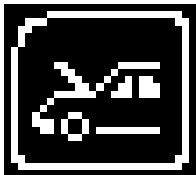
When you then “Log In” to the site you can keep an eye on the SPi updates page as well as the forum for handy hints and tips as well as general automotive diagnostics chat with other SP Diagnostics Customers.

## Quick Start Guide

Now you are ready to start using the SPi to diagnose faults and also carry out service functions on the range of cars covered. Remember you can look at the complete Applications List on the CD provided, simply put the disk in to your laptop or desktop PC and you will be presented with a menu to choose from the Application Guides.



Connect the SPi to a vehicle using the required harness. The SPi will then power up and take you to the Main Menu screen.



Using the keypad, navigate to the Manufacturer Icon and press OK.

Using the keypad to navigate up and down the menus you will be given the following options:

Select the **Manufacturer**

Select the **Model**

Select the **Type** of System ( ABS, AirBag, Engine etc..)

Select the **Size** of the engine

Select the **Fuel** type

Select the **Year** of the vehicle

Select the Variant of the vehicle

Select the Engine Code

And finally you will be shown the **System** or **Systems** fitted to that choice of vehicle

**The SPi will now load the correct software and establish communications with the vehicle!**

**Remember you can always call our Product Support Helpline on 0844 561 7861 for further assistance or speak to us about subscribing to the Vehicle Technical Support Helpline**

# Saved Screens

## Overview of Saved Screens

The saved screens functionality allows you to record an image of what is displayed on the SPi handset for viewing later. This can be used to record fault codes and descriptions or component readings without needing to write them down.

Screens that you save using the SPi are stored on the SD memory card and so are retained after the SPi is powered off. You can save as many screens as there is space for on the SD memory card (several hundred can be stored on the 2GB SD memory card provided as standard with the SPi).

Once screens have been saved on the SPi they can be transferred to your PC (computer) for viewing using the SPi Suite PC software (available from [www.spsupport.com](http://www.spsupport.com)). These screens can then be saved on to your computer's hard drive as standard image files or printed out.

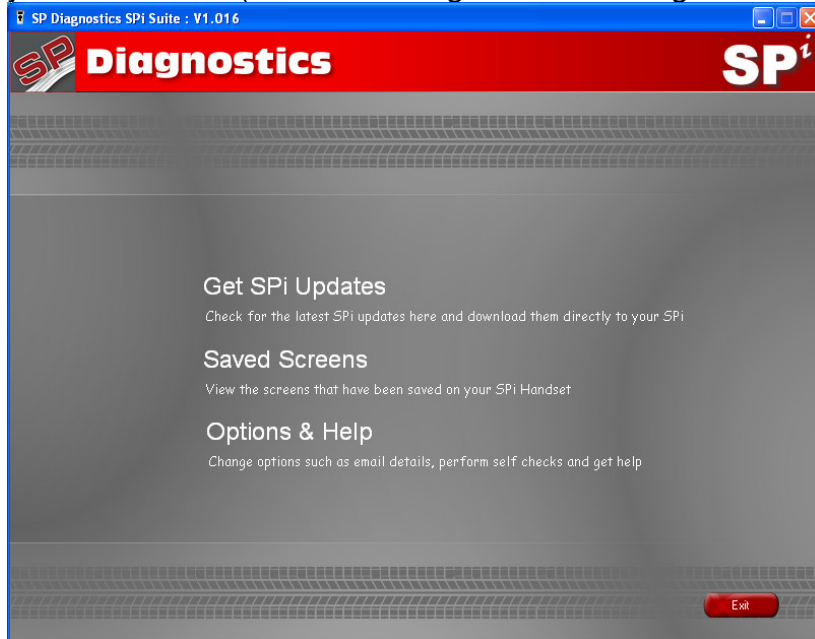
Saved screens remain stored on the SD memory card until they are deleted through the SPi Suite PC software.

## Saving screens on the SPi handset

1. When the SPi handset is displaying a screen you wish to save press the Special Function button (located below the ESC key on the handset keypad).
2. The SPi will then briefly display  
SAVING SCREEN  
in the top left corner of the screen
3. If the screen has saved successfully the message  
SAVING SCREEN  
will disappear and a short double beep will be audible.
4. If the screen does not save successfully a message  
FAILED TO SAVE SCREEN  
will be displayed. If this occurs then it could be that the SD memory card is full.

## Accessing screens saved on the SPi handset

1. Start the SPi Suite using either the *SP Diagnostics SPi Suite* icon on your desktop or on your start menu (*Start > All Programs > SP Diagnostics > SPi Suite*).



2. From the main screen click:

**Saved Screens**

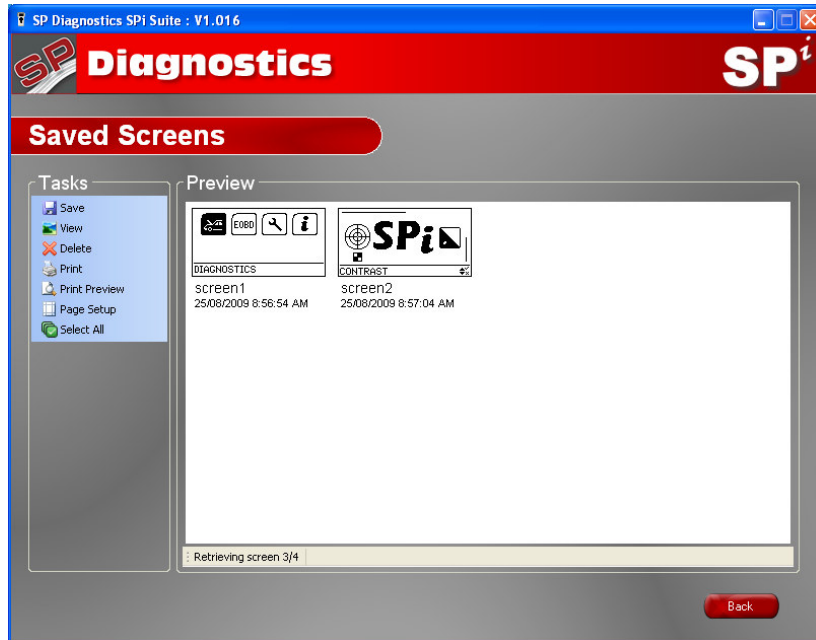
View the screens that have been saved on your SPi Handset

3. Connect your SPi as shown and click

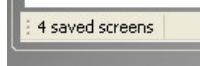
**Next**



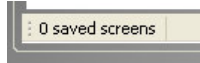
4. The screen below will be displayed and any screens saved on the SPi will be loaded one at a time into the *Preview* area.



5. Once all the screens have loaded the status bar will display the number of screens loaded:

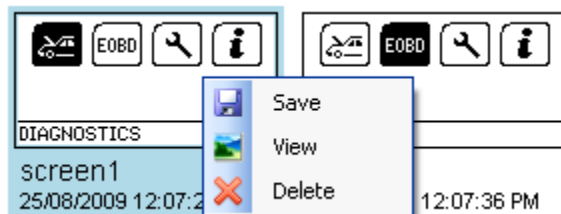


6. If there are no screens saved on the SPi handset the *Preview* area will remain blank and the status bar will display:



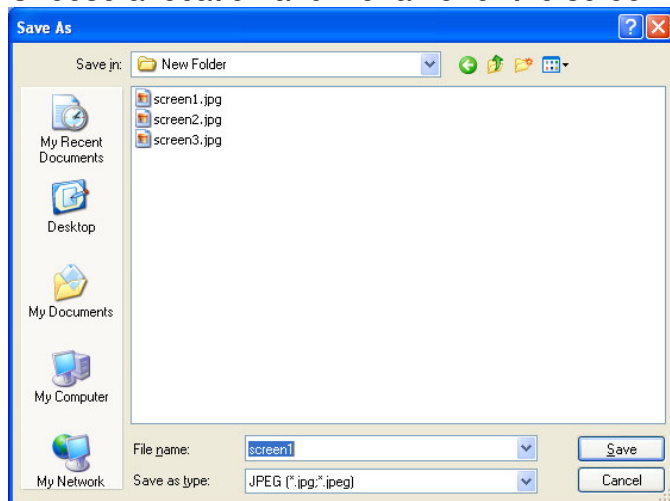
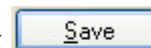
## Saving a single screen

1. Right click on the screen you wish to save, a menu will appear:



2. Click  Save

3. Choose a location and filename for the screen and click



Screen images can be saved in four possible formats by changing the 'Save as type' setting:

*Bitmap (\*.bmp)*

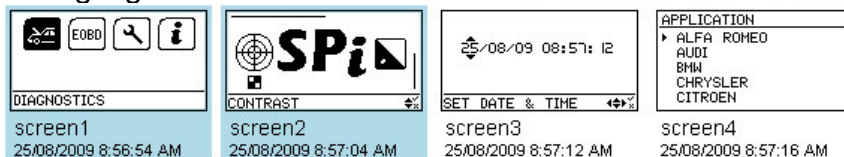
*GIF (\*.gif)*

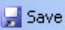
*JPEG (\*.jpg;\*.jpeg)*

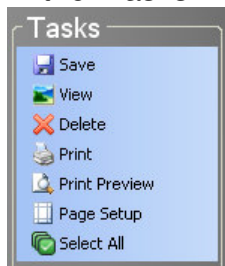
*PNG (\*.png)*

## Saving multiple screens

1. Select the screens that you wish to save by clicking on them, those that are selected will be highlighted:



2. In the 'Tasks' menu click 



3. Select a folder in which to save the screen images and click 

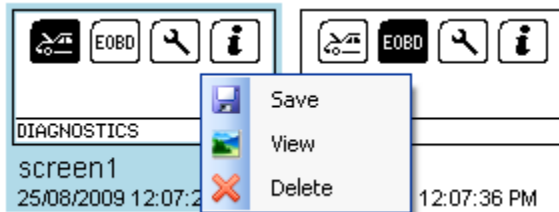



4. The status bar text will then indicate how many of the selected screens were successfully saved:

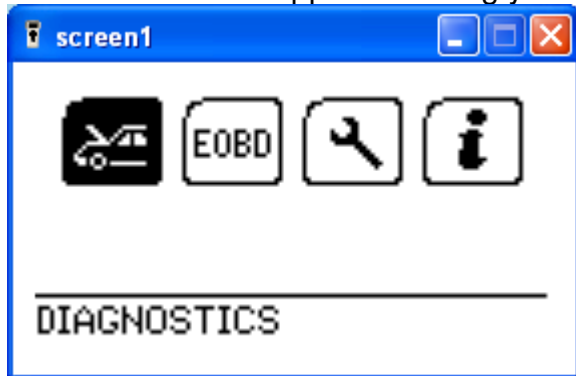


## Viewing a single screen

1. Right click on the screen you wish to view, a menu will appear:



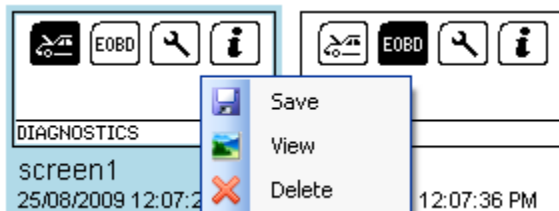
2. Click  View
3. A new window will appear showing you a larger version of the screen image:




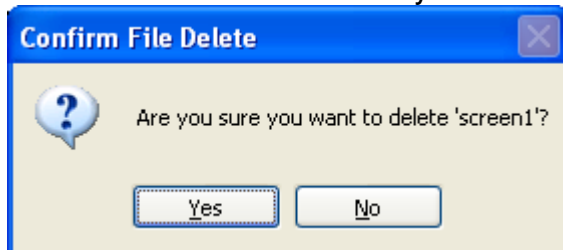
4. Click  when you have finished viewing the screen to close the window.

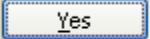
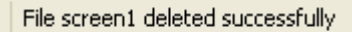
## Deleting a single screen

1. Right click on the screen you wish to view, a menu will appear:



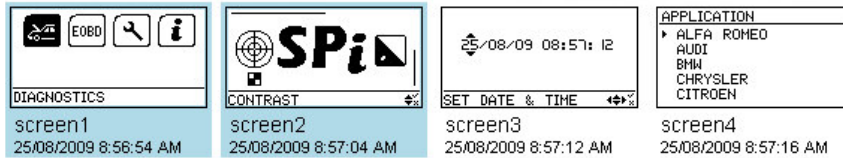
2. Click  Delete
3. You will be asked to confirm you wish to delete the screen:




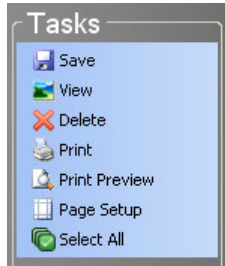
4. If you are certain you wish to delete this screen from the SPi handset click 
5. If the screen deleted successfully the status bar text will briefly confirm this:  

6. The Preview area will then be updated to show the remaining saved screens.

## Deleting multiple screens

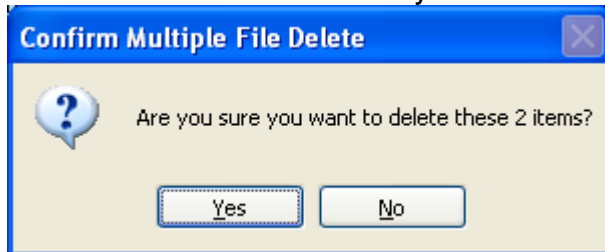
1. Select the screens that you wish to delete by clicking on them, those that are selected will be highlighted:

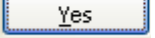



2. In the 'Tasks' menu click 



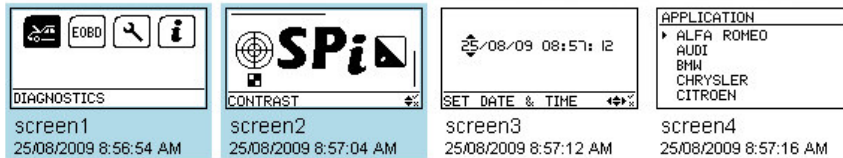
3. You will be asked to confirm you wish to delete the selected screens:




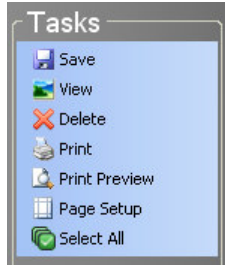
4. If you are certain you wish to delete these screens from the SPi handset click 
5. If the screens deleted successfully the status bar text will confirm this:  

6. The Preview area will then be updated to show the remaining saved screens.

## Printing screens

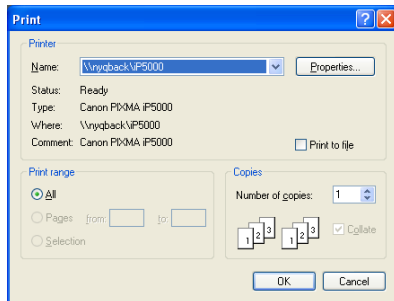
1. Select the screens that you wish to print by clicking on them, those that are selected will be highlighted:



2. In the 'Tasks' menu click  Print

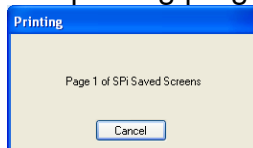


3. The standard windows Print dialog will appear:

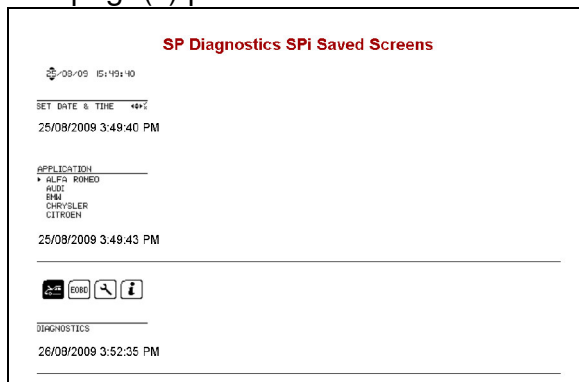


4. Select the printer and options you desire then click 

5. The printing progress will then be displayed and the selected screens printed:

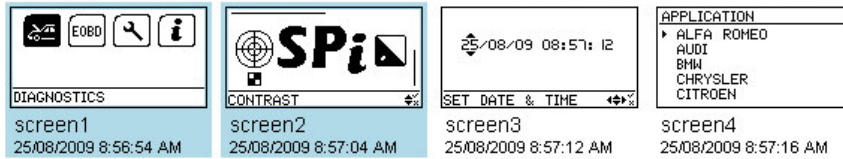


6. The page(s) printed should resemble this example:

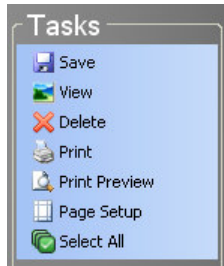


You can use the print preview function to see what the printed pages will look like before they are sent to the printer. This can be useful to be certain you have selected the correct saved screens.

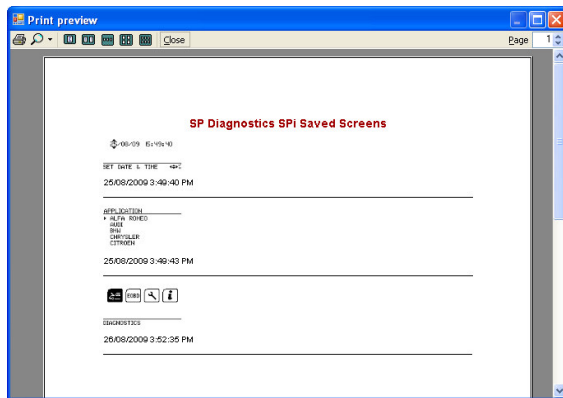
1. Select the screens that you wish to print preview by clicking on them, those that are selected will be highlighted:


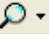

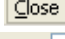



2. In the 'Tasks' menu click  Print Preview



3. The Print preview window will then be displayed to show you how the printed document will look:

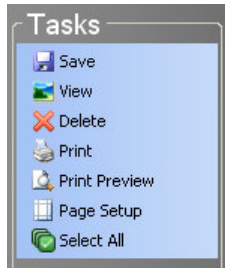


4. From this screen you can:
  - click  to print the document
  - use  to zoom in and out
  - use  to show different number of pages on the screen
  - click  to exit print preview
  - use  to navigate between the pages in a multi-page document

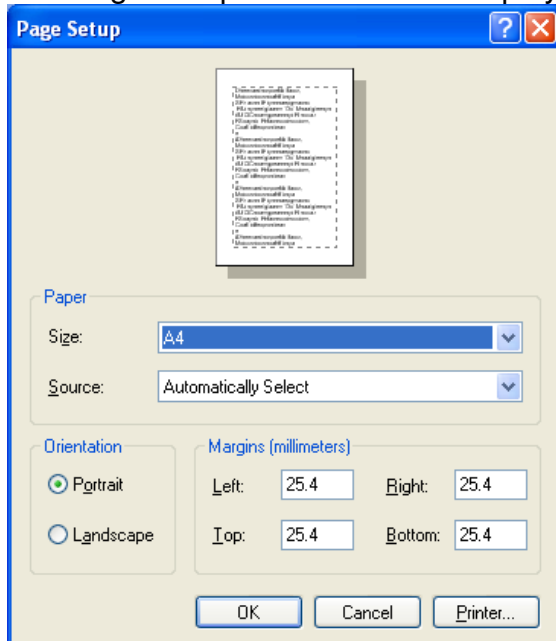
## Page Setup

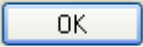
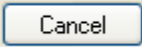
The page setup screen is used to configure printing preferences for paper size and margins.

1. In the '*Tasks*' menu click  Page Setup



2. The Page Setup window will be displayed:



3. Once you have made any necessary adjustments to the printing settings press  to save the changes or  to discard the changes.